

# Windale Public School



**Windale Public  
School**

**Kilfera Street  
Windale  
NSW 2306**

windale-p.school@det.nsw.edu.au

**Phone:**

**(02) 4948 8864**

**Fax:**

**4948 9720**

## INSIDE THIS ISSUE:

Classes 2019	2
Safety Around Schools	3
Milabah	4
Canteen Menu	6

TERM 1 WEEK 2

4TH FEBRUARY, 2019

## Principal's Message

Welcome everyone to the new school year at Windale Public School. This includes our returning students and families as well as our new students, families and over 30 Kindergarten students who began their schooling careers last Thursday. Our enrolment numbers continue to grow and as of this week for the first time in many years, both our Preschool groups are full which means any new applications from now on will go on our waiting list. This is exciting as it means people are hearing about the quality educational programs we offer at Windale, including in our Preschool, and are enrolling their children with us. We couldn't be happier.

### 2019 CLASSES

In 2019, we have nine mainstream classes and two support classes. To keep class numbers down across the board, the school has funded the ninth mainstream class so that our largest class has approximately 23 children in it which gives every one of our students more individual attention than many other schools offer. To allow this to happen, most of our classes this year are composite which means they include students from more than one grade. Regardless of what grade students are in, our class teachers target their teaching to the needs of every individual student so this is in no way a negative thing for your child.

### PARENT TEACHER INTERVIEWS

Students have been carefully placed in their new classes in consultation with last year's teachers as well as this year's

and everyone has settled in really well by the end of the first week. As we did last year, we will be holding parent teacher interviews in mid Term 1 once our classes have settled in and teachers have had the opportunity to do assessments. This will give us the opportunity to work together with you to develop IEPs and PLPs which meet the individual needs of your child.

### SWIMMING CARNIVAL

This Wednesday we are holding our annual Swimming Carnival at Charlestown Pool for students in Years 3-6 as well as those students in Year 2 who turn 8 this year. We look forward to seeing lots of family members there to cheer everyone on. Just a reminder that students must have returned their signed permission note and \$3.50 to be able to attend. All students are expected to attend as usual on this day and will be provided with schoolwork to complete should they remain back at school.

Have a fantastic week of learning everyone!

Ms Cindy Sadler

Principal



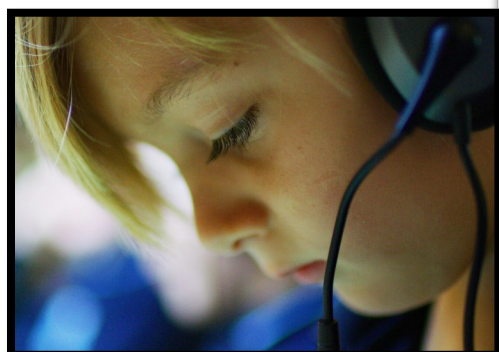
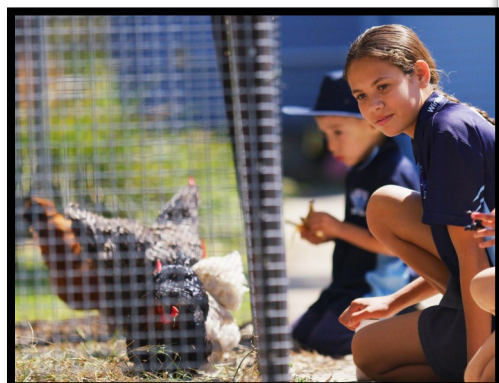
## IMPORTANT DATES TO REMEMBER

**Wednesday 6th February**  
**Swimming Carnival**  
**8 years and older**

**Hunter Sports High School**  
**Open Day—12pm**  
**Year 4 - 6**  
**Wednesday 13th February**

**Monday 25th February**  
**P&C Meeting**  
**9:30am**

CLASSROOM	TEACHER
KD	Mrs Dore
K/1M	Mrs McKay / Mrs Fernandez
1/2S	Mrs Stokes
1/2L	Miss Long
2/3S	Mrs Smith / Mrs Robinson
3/4H	Mrs Houston
4/5D	Mrs Dugomanov
5/6C	Miss Carter
5/6T	Mrs Tonge
EAGLES	Mr Mitchell
FALCONS	Mrs McBay
MUWANI	Miss Lindsay
WILAYI	Miss Lindsay



# SAFETY around schools



## ROAD RULES IN SCHOOL ZONES:

### Pedestrian crossings

You cannot stop within 20 metres before a pedestrian crossing or 10 metres after a pedestrian crossing unless there is a control sign permitting parking. *Minimum penalty: \$439 and two demerit points*

### Double parking

You may not stop on the road alongside to another vehicle at any time even to drop off or pick up passengers. *Minimum penalty: \$330 and two demerit points*

### Parking on a verge

You cannot stop or park on a verge area (footpath, nature strip, dividing strip or kerb). *Minimum penalty: \$183 and two demerit points*

## PARKING RESTRICTION SIGNS



### You cannot stop here

A driver must not stop in a no stopping zone.

*Minimum penalty: \$330 and two demerit points*



### You can stop here for two minutes only

You have no more than two minutes to drop off or pick up passengers or goods and the driver must stay within three metres of the vehicle.

*Minimum penalty: \$183 and two demerit points*



### You cannot stop here

You are not allowed to stop your vehicle unless you are driving a bus.

*Minimum penalty: \$330 and two demerit points*



### You cannot stop here

Unless a current Mobility Parking Scheme (MPS) permit is displayed.

*Minimum penalty: \$549 and one demerit point*





# SAFETY

## around schools



### ROAD RULES IN SCHOOL ZONES:

#### Pedestrian crossings

You cannot stop within 20 metres before a pedestrian crossing or 10 metres after a pedestrian crossing unless there is a control sign permitting parking.

*Minimum penalty: \$439 and two demerit points*

#### Double parking

You may not stop on the road alongside to another vehicle at any time even to drop off or pick up passengers.

*Minimum penalty: \$330 and two demerit points*

#### Parking on a verge

You cannot stop or park on a verge area (footpath, nature strip, dividing strip or kerb).

*Minimum penalty: \$183 and two demerit points*



### PARKING RESTRICTION SIGNS



#### You cannot stop here

A driver must not stop in a no stopping zone.

*Minimum penalty: \$330 and two demerit points*



#### You cannot stop here

You are not allowed to stop your vehicle unless you are driving a bus.

*Minimum penalty: \$330 and two demerit points*



#### You can stop here for two minutes only

You have no more than two minutes to drop off or pick up passengers or goods and the driver must stay within three metres of the vehicle.

*Minimum penalty: \$183 and two demerit points*



#### You cannot stop here

Unless a current Mobility Parking Scheme (MPS) permit is displayed.

*Minimum penalty: \$549 and one demerit point*





# Milabah

Schools as Community Centre

Roselea Newburn – Facilitator

Windale Public School

Kilfera Street Windale NSW 2306

Tel: 49 487786 Fax: 49 489720

E-mail: [roselea.newburn@det.nsw.edu.au](mailto:roselea.newburn@det.nsw.edu.au)



## Term 4 2018 Programs

## What's happening at Milabah

### Playgroups

#### Jarjums playgroup

Is for 0–5 year olds and is held in Milabah every **Tuesday, 9.30am – 11.30am.**

Come and join Belinda, have some fun and pick up some great ideas to keep your

children's active minds busy with reading, nursery rhymes playdough and lots of craft activities.



We request a gold coin donation for craft items and morning tea will be provided.

#### Samaritans Supported Playgroup

Come along and join Sharna and Allison for lots of fun, crafts, games, music and stories – and it's free

**When:** Wednesdays, 9.30 – 11.30 am

**Where:** Milabah Schools As Community Centre, Windale Primary School – Kilfera Street Windale

*Morning tea provided.*

*For information call:*

*Allison Forsythe on 0428 166 119*

### Legal Advice

Free legal advice is available through Milabah. If you need legal advice and would like to talk to Pat (our solicitor), ring Roselea and book in a day and time. This way, Pat can utilise her time to better accommodate everyone's needs. If the matter is urgent I can organise for Pat to give you a call.

### BE AMBITIOUS

#### BE READY FOR FUTURE CAREERS & TRAINING CHOICES

#### Up-Skill 4 U

CSO5555- Statement of Attainment in Education and Employment Pathways



#### COURSE DESCRIPTION:

This course will provide learners guidance & planning for their future training and career options.

This community focused course will include a range of essential computer operations and employability skills, focusing on future training and employment opportunities.

You can pathway into various Certificate level courses after identifying your options.

#### Topics will include:

- Microsoft office computer skills
- Resumes & Interview variables
- Recognition of your transferable skills and prior qualifications

#### HOW TO GET INVOLVED

Attend Information Session

Friday 8<sup>th</sup> February, 2019

9.30 am – 11.30 am

Milabah, Kilfera St Windale Public School

To register your interest, please contact:  
Roselea Newburn, Coordinator at:  
Milabah SACC on 4948 7786

For all other enquiries please contact Cass Be ph

#### COURSE SNAPSHOT

CSO5555 – Statement of Attainment in Education & Employment Pathways

Cost: This training is fully subsidised by the NSW Government

**Course start:**  
Friday 15<sup>th</sup> February, 2019 at:  
Milabah, Windale Public School  
1 day per week, 9.30 – 12.30  
Term 1

#### CONTACT US TODAY!

**For more information**  
Contact: Cassandra Beon  
Phone: 4923 7414 or 4923 7260  
Email: [casandra.beon@tate.nsw.edu.au](mailto:casandra.beon@tate.nsw.edu.au)

TAFE NSW



## Come and meet new friends



Give yourself some 'Timeout' to relax, have a chat and discover that creative self you have hidden away.

**Thursdays 12:30 - 2:30pm**

**MILABAH  
SACC**

Windale Public School

Please phone Roselea on 4948 7786 for expressions of interest.  
Children are welcome under parent supervision.

## Windale Fresh

### Dates for orders to be in for Term1:

I would love to see more community members take advantage of this great program. Orders for Term 1 need to be in by: Friday 8<sup>th</sup>, 22<sup>nd</sup> March and 5<sup>th</sup> April..



Orders can be picked up from Milabah on the following Monday from about 12pm. Volunteers welcome to help pack baskets. Fresh fruit and vegetables can be ordered fortnightly at great prices. We order online and fresh, seasonal produce is delivered to Milabah. The cost will still be \$25 for a box full of healthy goodies. Please visit Milabah to place your order each fortnight.

## Happening in the Community



At times all parents feel lost or without a clue about what our child might need from us. Imagine what it might feel like if you were able to make sense of what your child was really asking from you. The Circle of Security parenting program is based on decades of research about how secure parent-child relationships can be supported and strengthened.

This course will cover –

- Understanding your child's emotional world by learning to read their emotional needs
- Supporting your child's ability to successfully manage emotions
- Enhance the development of your child's self esteem
- Honour your innate wisdom and desire for your child to be secure

**When:** Commences TUESDAY 5<sup>TH</sup> FEBRUARY 2019. Runs for 6 weeks!

**Time:** 10.30 am – 12.30 pm

**Where:** Eastlakes Family Support Service, 14 Hickory Rd, Gateshead

**Childcare:** FREE – Booking essential

**Bookings:** Please 4943 9255



### 1-2-3 MAGIC® & EMOTION COACHING PARENT COURSE

*Learn to manage difficult behaviour in children 2-12 years old*

A three-session program for parents and carers  
at Eastlakes Family Support Service, 14 Hickory Rd, Gateshead  
Commencing on **TUESDAY 19<sup>TH</sup> MARCH 2019** at 10.30 am – 1.00 pm

**Learn:**

- ✓ To engage your children's cooperation by positively noticing and encouraging them
- ✓ To set clear expectations and help them to develop frustration tolerance
- ✓ To help children's brains to develop filters for behaving well
- ✓ To resolve family conflict quietly
- ✓ Some simple strategies to practise being a calm parent

**Course: No Cost – Childcare provided – Booking Essential!**  
Register for this course by contacting **Paula or Steve** on 4943 9255.

**What people are saying...**  
*What a relief to come across a program that preserves the dignity of the child, maintains the self control of both the parent and the child and is actually easy to remember when memory is the first thing to go!*

**Who is running it?**  
The presenters for this course are Paula Watson and Steve Phoenix.

*I realise quickly that 1-2-3 Magic can be a magnificent preventative measure that any parent can use to avoid raising a child who later down the line, needs excessive discipline or grows out of control.*

For more information contact Paula or Steve on 4943 9255  
*A program of Eastlakes Family Support Service*

• An end to the arguing and yelling! • It saved our lives • Simple, sane, effective

\*This course is being run by a Parentalhelp® licensed practitioner. www.parentalhelp.com.au



Do you have a child turning 4 in 2019? If so, there are vacancies in the HIPPY (Home Interaction Program for Parents and Youngsters) free program

HIPPY is a 2 year home-based early childhood program that builds the confidence and skills of parents and carers to create positive learning environment to prepare their child for school.

Do you want to find out more?

Please call HIPPY Eastlakes Coordinator Kathie Mackay on 0490503994

Or email [kathie@jobquest.org.au](mailto:kathie@jobquest.org.au)

Limited spaces- Don't miss out!



**For further events and updates keep an eye out in your School newsletter and School Facebook page.**

**Or call Roselea on 49487786**







## WINDALE P.S CANTEEN – 2018 MENU

Canteen Ph : 49487 446

8.30am to 12.00pm - Monday & Friday

8.30am to 2.00pm – Tuesday to Thursday

### **ALL ORDERS MUST BE IN BY 10.00am**

#### **FRUIT**

Fruit (Seasonal) \$1.00

#### **SANDWICHES**

##### **White or Multi Grain Bread / White Roll**

Vegemite \$1.20  
 Cheese OR Tomato \$1.40  
 Cheese AND Tomato \$1.70  
 Meat – Chicken / Ham / Salmon \$2.50  
 Egg & Lettuce \$2.50  
 Salad (Lettuce, Carrot, Tomato, Beetroot, Onion, Cheese) \$3.00  
 Meat & Salad \$5.00  
 Plain Bread or Roll – White Bread Roll or 2 Slices of White or Multigrain Bread 50c

#### **SALAD TUBS**

Small Salad (Lettuce, Carrot, Tomato, Beetroot, Cheese, Egg) \$3.50  
 Large Salad (Lettuce, Carrot, Tomato, Beetroot, Onion, Cheese, Egg) \$4.50  
 Add Meat – Chicken / Ham / Salmon Extra \$1.00

#### **WRAPS**

Kids Salad (Lettuce, Carrot, Tomato, Beetroot, Cheese) \$3.00  
 Full Salad (Lettuce, Carrot, Tomato, Beetroot, Onion, Cheese) \$4.00  
 Chicken Tender with Full Salad (Lettuce, Carrot, Tomato, Beetroot, Onion, Cheese) \$5.00  
 Chicken Tender (Lettuce, Mayo) \$4.00  
 Add Meat – Chicken / Ham / Salmon Extra \$1.00

#### **HOT TOASTED WRAPS OR SANDWICHES**

Hot Toasted Wrap or Sandwich  
 (Ham, Cheese, Tomato) \$3.70  
 (Cheese & Tomato) \$2.20  
 (Ham & Cheese) \$3.50

#### **BURGERS & ROLLS**

Works Burger (Meat, Egg, Lettuce, Tomato, Cucumber, Onion, Beetroot, Cheese, Sauce) \$5.50  
 Plain Burger (Meat, Lettuce, Tomato, Sauce) \$4.00  
 Chicken Burger (Chicken Pattie, Lettuce, Mayo) \$3.00  
 Cheesy Burger (Meat, 2 x Cheese, BBQ Sauce) \$2.50  
 Chicken Gravy Roll \$3.00  
 Chicken Tender Roll \$2.50

#### **HOT FOOD**

Chicken Fingers / Chicken Dino Nuggets Each - 50c  
 5 for \$2.50  
 Potato Gems 5 for 50c  
 Fried Rice / Lasagne / Spaghetti Bolognese \$3.50  
 Pizza - Ham & Pineapple / Cheese & Bacon \$2.50  
 Garlic Bread \$1.10  
 Corn on the Cob 50c  
 Pie \$2.50  
 Party Pie \$1.80  
 Sausage Roll \$1.80  
 Chicken Wedges Each - 80c  
 3 for \$2.40

#### **SAUCES**

Tomato / BBQ / Mayo 40c

#### **SNACKS**

Sao - 2 biscuits with 1 filling 50c  
 Sao - 2 biscuits with 2 fillings 80c  
 (Sao Fillings – Vegemite / Tomato / Cheese)  
 Chips - Honey Soy / Sea Salt \$1.00  
 Snaps - Light & Tangy / BBQ \$1.50  
 Popcorn 50c

#### **DRINKS**

Chocolate or Strawberry Milk \$2.20  
 Plain Milk \$1.60  
 Small Water \$1.00  
 Large Water \$2.00  
 Small Juice \$1.60  
 Large Juice \$2.00  
 Hot Milo (Winter Only) \$1.00

#### **ICE BLOCKS**

Juice Cup 10c  
 Milk Cup 20c  
 Fizz – Lemonade / Cola 60c  
 Mony's - Choc / TNT / Bluey / Other flavours 80c  
 Moosie - Choc / Bubblegum / Banana \$1.20  
 Vanilla Cups \$1.50  
 Frozen Yoghurt - Mango Watermelon / Choc-Vanilla / Strawberry-Vanilla \$2.00

